

TESTERLYER pro Compliance
- Now ready for MOST 50 ePhy -

The company RUETZ SYSTEM SOLUTIONS is specialised in car infotainment based on MOST Technology with a focus on:

- MOST Compliance Test House
 - Profile Compliance
 - Core Compliance
 - Optical Limited Physical Layer Compliance
 - Electrical Physical Layer Compliance
- Professional Services
 - Specification and System Integration of MOST Systems

- **Tools for MOST**

- TESTERLYZER pro Compliance (Testing on Network Level)
+ OEM Add Ons



- TTsuite MOST (Testing and Simulation on Application Level)
+ Testsuites (Connection Management, AUX_in,...)



UNITEC Co., Ltd. Located in Shin-Yokohama

Deeply involved in MOST protocol for 5 years

Rep for RUETZ SYSTEM SOLUTIONS in Japan

Executing followings

/ Compliance testing at Shin-Yokohama/Japan

/ Selling “Testerlyzer Pro”, “TTSuite”.....

/ Consultation on MOST development

History

1997 1999 2001 2003 2005 2007 Future

OEM specific solution(s) MOST 25 oPhy

Compliance Testing

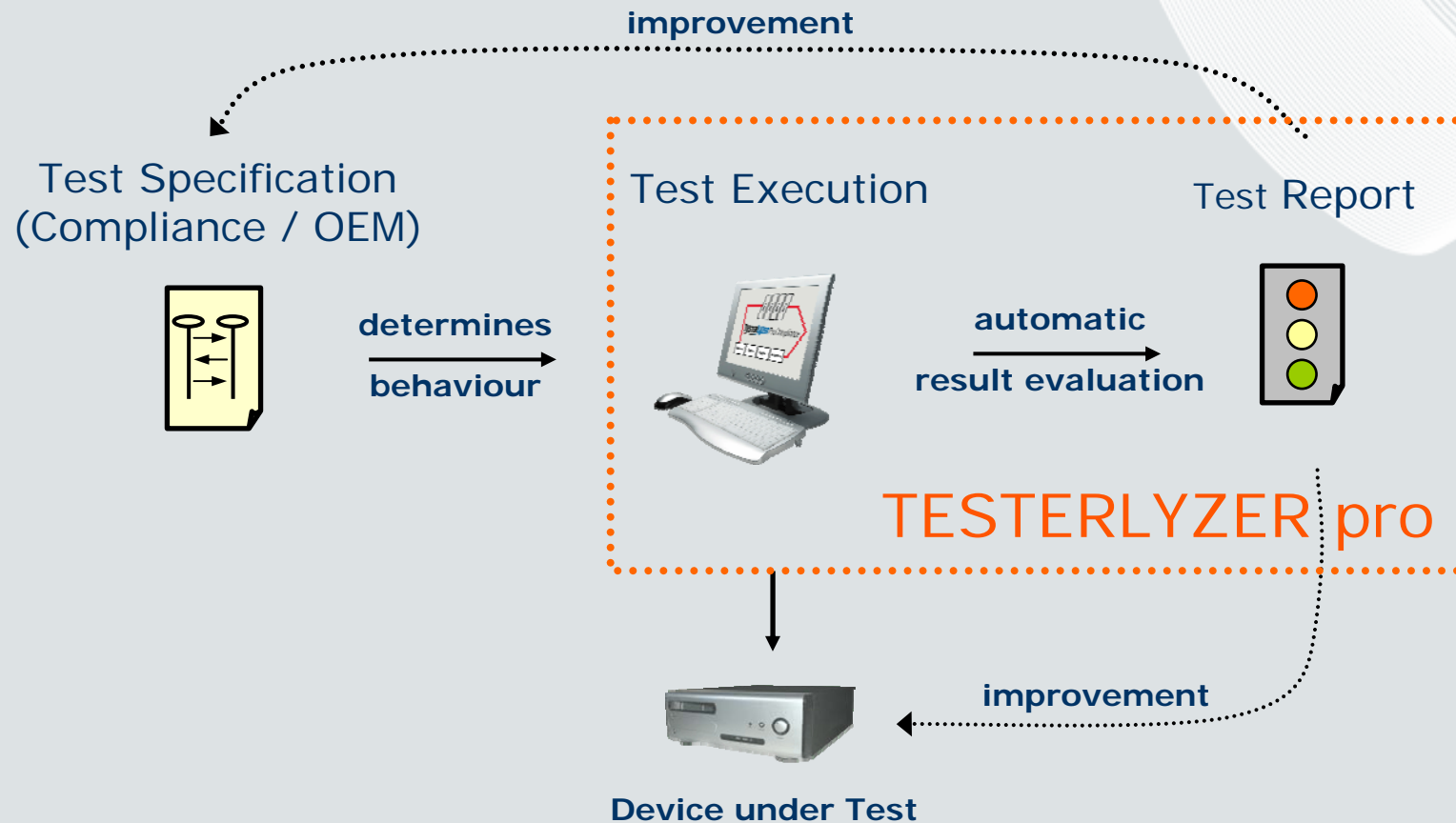
MOST 50 ePhy

MOST 150



- Based on MOST Expertise since the very beginning
- Contains deep testing know-how
- Made for Compliance Verification plus OEM Add- ons
- Future proof

- Based on MOST Expertise since the very beginning
- Contains deep testing know-how
- OEM specific add-on's available
- Made for Compliance Verification plus OEM Add- ons
- First automated test tool for ePhy Core
- Future proof
(past: MOST 25 oPhy → today MOST 50 ePhy → tomorrow MOST 150 oPhy)



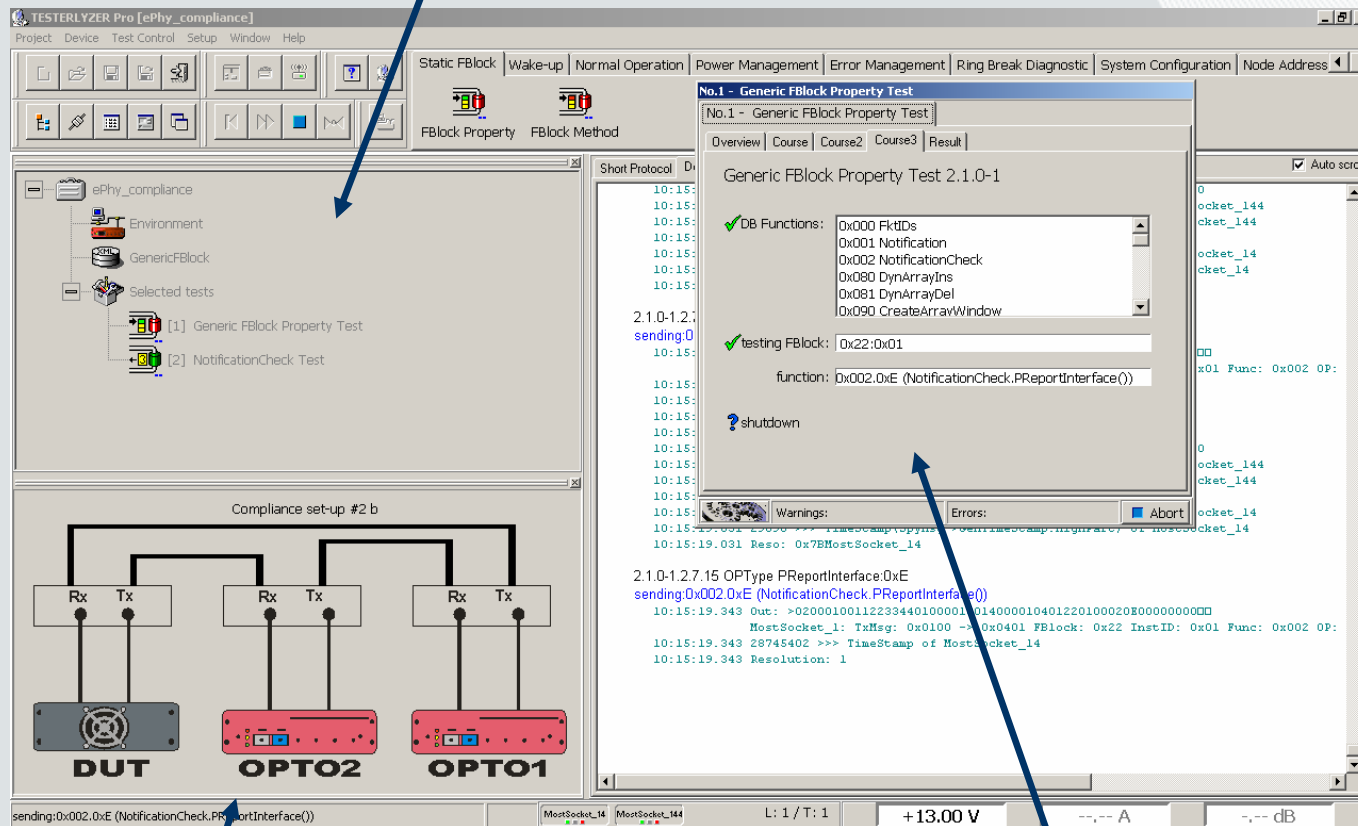
- Test specification contents (1v3) are realized precisely as executable Tests
- Maintenance due to Specification content changes (including Errata Sheets)
- Test reports are unambiguous documents for quick improvement cycles
- Support includes assistance for feedback to MCTG

TESTERLYZER pro Compliance ePhy

Features

RUETZ
SYSTEM SOLUTIONS

Test Configuration / Automation



Test Setup

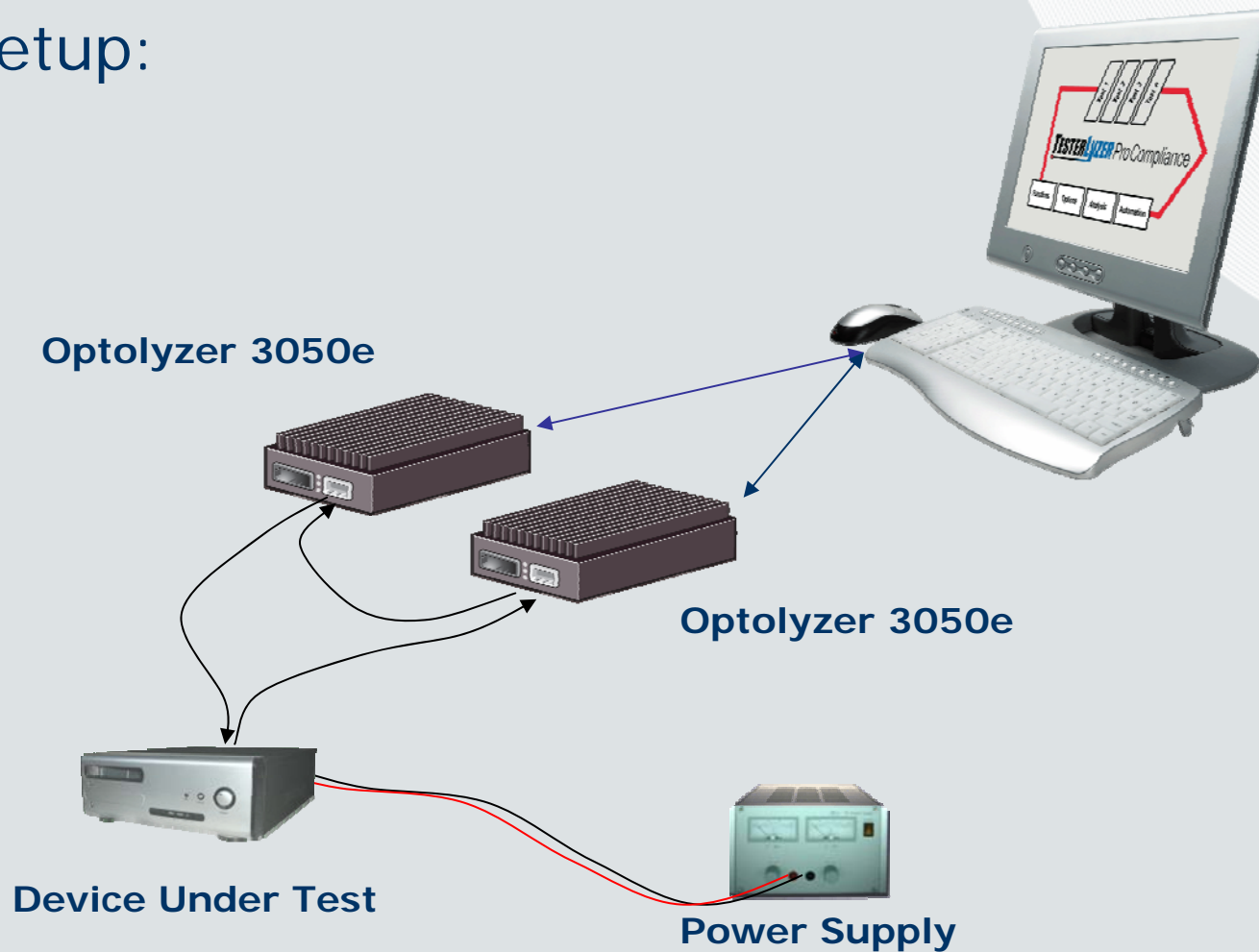
Result Evaluation

TESTERLYZER pro Compliance ePhy

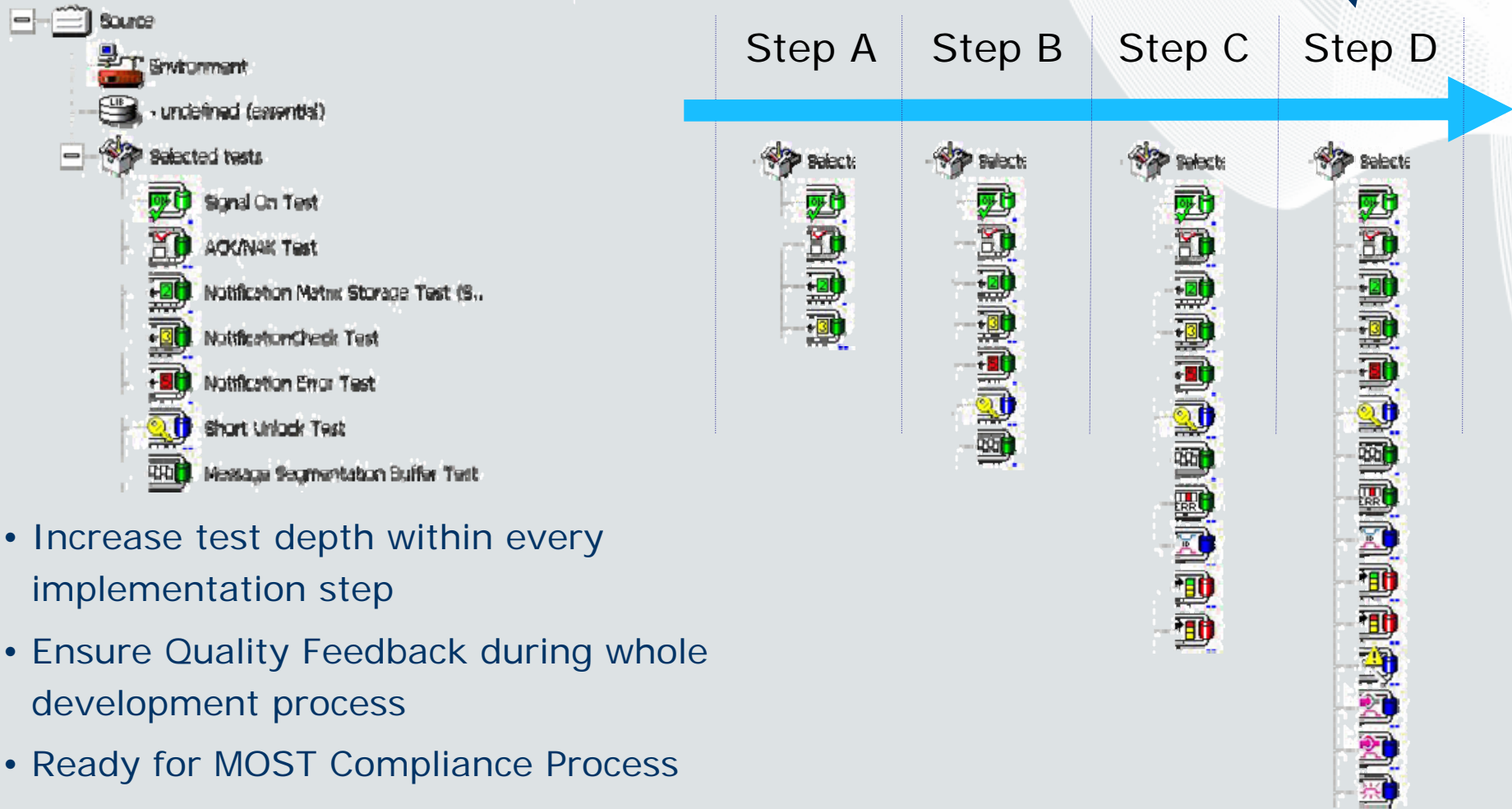
Features

RUETZ
SYSTEM SOLUTIONS

Test Setup:

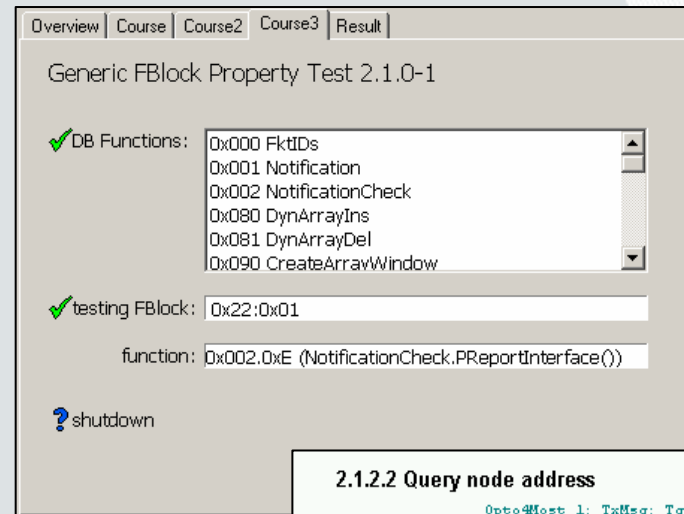
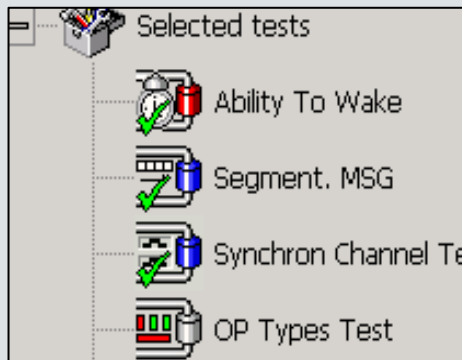


Test Configuration:



- Increase test depth within every implementation step
- Ensure Quality Feedback during whole development process
- Ready for MOST Compliance Process

Result Evaluation:



- each test is marked as ok / notok
- each test segment and marked as ok / notok
- result window shows errors and warnings
- expert protocol design in html

2.1.2.2 Query node address

```

Opto4Host_1: TxMsg: Tgt: 0401 FBlock: 0x01 InstID: 0x00 Func: 0x003 OP: 0x1
Opto4Host_1: SendResult: 0x50
12:02:00.174 Opto4Host_1: RxMsg: Src: 0101 FBlock: 0x01 InstID: 0x01 Func: 0x003 Op: 0xC
Opto4Host_1: Data[2]: 0x0101
    
```

node address expected	node address received
0x0101	0x0101

2.1.2.3 Query group address

```

Opto4Host_1: TxMsg: Tgt: 0401 FBlock: 0x01 InstID: 0x00 Func: 0x004 OP: 0x1
Opto4Host_1: SendResult: 0x50
12:02:00.679 Opto4Host_1: RxMsg: Src: 0101 FBlock: 0x01 InstID: 0x01 Func: 0x004 Op: 0xC
Opto4Host_1: Data[2]: 0x0350
    
```

group address expected	group address received
0x0350	0x0350

Conclusion

- UNITEC Co., Ltd. and RUETZ SYSTEM SOLUTIONS GmbH have a strong partnership for MOST Systems
- They support the whole specification, development and system integration process
- TESTERLYZER is now ready for MOST 50 ePhy
- MOST Compliance Test House is established in Japan

Thank you for your attention

-

Please visit us at our booth